

making the impossible, possible

service overview

Eye Bank Services

Keeping Our Eyes on Your Eyes

The EBAA is the oldest transplant association and has restored sight to over 1 million individuals. This experience and tradition has helped define modern medicine and research. NGL is no rookie either, and actually invented the next flight out process. Since 1971 NGL has used this same type of pioneering experience to constantly improve, evolve, and modify our processes to handle the most sensitive shipments. We help eye banks everyday clear tissue for donation handling serology shipments to labs and cornea and sclera tissue to surgical teams. NGL will keep you, the labs, and surgical teams in the loop with up to the minute info with our best in class technology.

■ Flexible Serology Options With Popular Denver Labs

NGL's corporate headquarters is located in the Denver Area and we source our own professional uniformed drivers to handle the most critical shipments. This gives NGL cost-effective and flexible options to consolidate serology shipments in Denver to save you money without sacrificing service and control.

■ Real Time Tracing - Visibility for you and the surgical teams

NGL's proprietary cloud based NetShip system provides elite level of visibility, including radar images of the flight path of your cornea, sclera or serology shipment in real-time. Auto-notifications can be set-up to inform you and awaiting surgical teams on shipment status and possible delays.

■ Airline Control

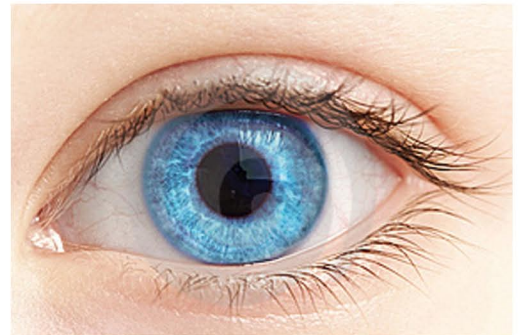
Being one of the first and largest providers of next flight gets NGL the attention of the top personnel within the cargo management team of the major airlines. We conduct reviews with the airlines every quarter to review past issues for corrective actions and to implement processes to avoid future service failures. Our technology system also enables us to quickly update flight times, cancellations, cargo hours, and connecting hubs to avoid.

■ Unique Labeling Limits Airline Bumps

NGL has unique labeling solutions for cornea tissue and any other UN3373 CAT B shipments. These labels catch the attention of the airlines to limit bumped shipments and provide temperature and handling instructions for optimal care of your package.

The Experience of a Market Leader

Established in 1971 as Network Courier Service, today NGL is one of the leading transportation providers to the Eye Bank Community. We are a market leader in tissue and serology transportation, operating 24 hours a day, 365 days a year.



NGL Transportation Services:

- Sameday Air
- Sameday Ground
- International NFO
- Hand Carry On-Board Courier Service
- Freight Management
- Charter
- Time Critical Transportation
- Carrier Management and Optimization

Corporate Headquarters
320 Interlocken Parkway, Suite 100
Broomfield, CO 80021
Phone: 866.938.1870
www.nglog.com

